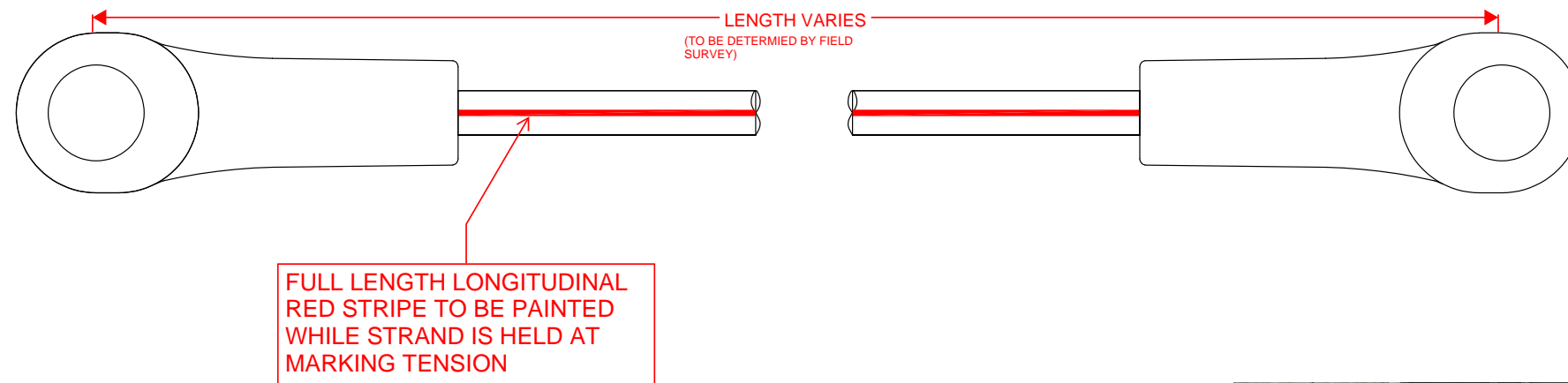
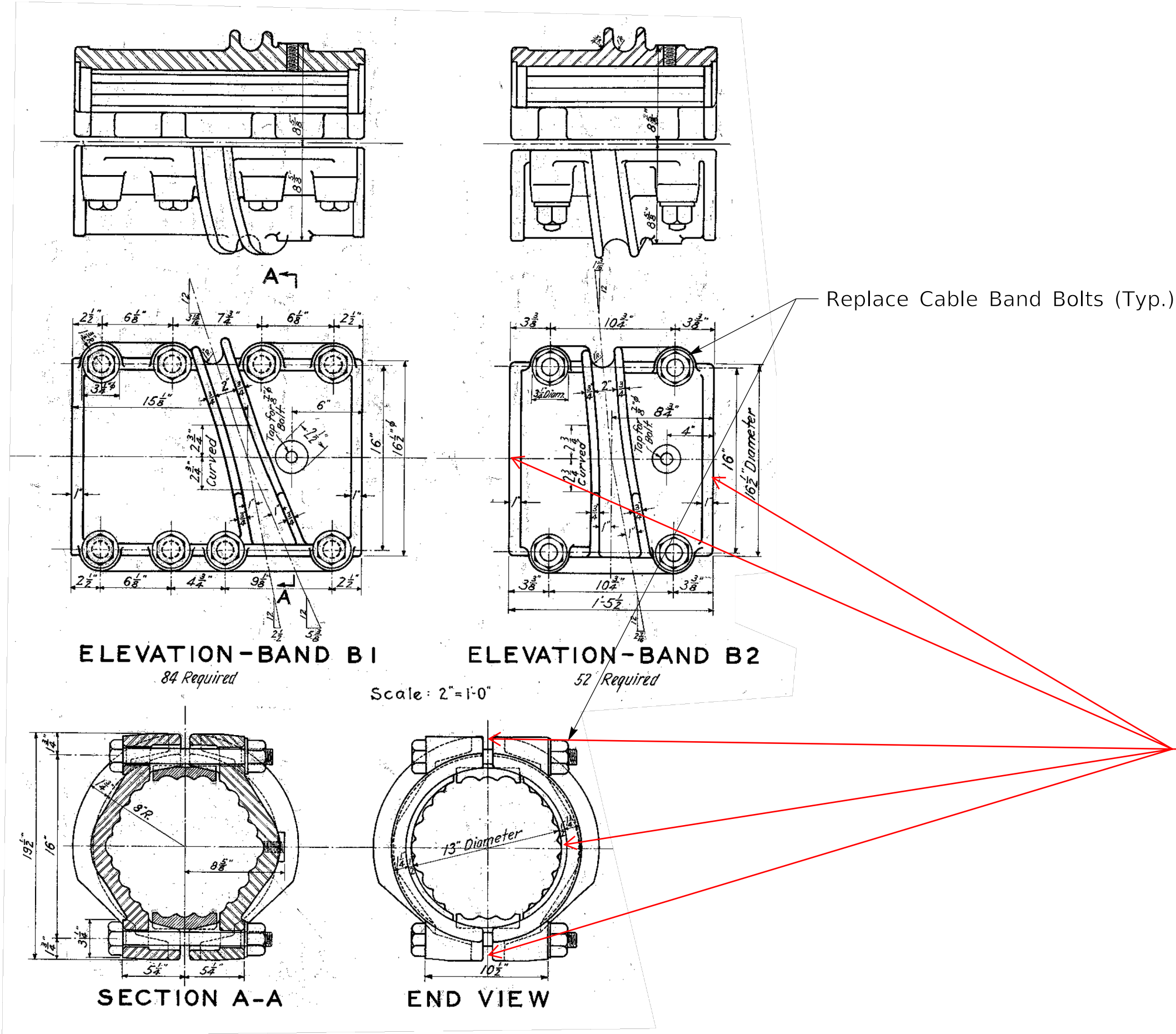


SIMON KENTON BRIDGE SUSPENDER ROPE RED STRIPE



EXAMPLE SUSPENDER ROPE DELIVERED TO PROJECT SITE WITH RED STRIPE



REPAIR 5
CABLE BAND BOLT REPLACEMENT

Repair 5 - Cable Band Bolt Replacement

1. See the Special Note for Cable Band Bolt Replacement.

ALL WORK SHALL BE IN ACCORDANCE WITH THE SPECIAL NOTE FOR CABLE BAND BOLT REPLACEMENT. THE FOLLOWING IS PROVIDED AS CLARIFICATION AND IS TYPICAL FOR ALL CABLE BAND LOCATIONS.

CLEANING AND CAULKING REMOVAL:

ALL SEALING MATERIAL IN CIRCUMFERENTIAL REGLETS, TOP LONGITUDINAL JOINTS, AND BOTTOM LONGITUDINAL JOINTS SHALL BE REMOVED. THE SURFACE SHALL BE CLEANED PER SECTION 614 "MAINTENANCE CLEANING AND PAINTING STEEL BRIDGES". THIS SHALL EXTEND 3/4" BEYOND WHERE NEW CAULKING IS INSTALLED TO ALLOW FOR PROPER PRIME COAT SEALING AND ADHERENCE TO THE BASE STEEL.

NEW CAULKING:

NEW CAULKING SHALL BE INSTALLED IN CIRCUMFERENTIAL REGLETS AND TOP LONGINTUDINAL JOINTS WITH APPROVED CAULKING MATERIAL BONDING DIRECTLY TO STEEL SUBSTRATES. NEW CAULKING SHALL ALSO BE INSTALLED BETWEEN THE CABLE BAND SADDLE AND SUSPENDER ROPE EXTENDING 3" EACH SIDE AND TOP LONGITUDINAL JOINT INTERFACES. ONCE NEW CAULKING HAS CURED, AND ALL BOLT REPLACEMENT PROCEDURES HAVE BEEN COMPLETED, NEW CAULKING SHALL BE PRIME COATED. PRIME COAT SHALL FULLY SEAL ALL NEW CAULKING AND ANY UNCOATED STEEL THAT IS EXPOSED DURING CLEANING PROCESSES.

BOTTOM LONGITUDINAL JOINTS SHALL BE LEFT OPEN TO ALLOW WATER EGRESS. STEEL SURFACES EXPOSED DURING CLEANING AND REMOVAL OF CAULKING IN THE BOTTOM LONGITUDINAL JOINTS SHALL BE PRIME COATED.

ALL NEW BOLT ASSEMBLIES SHALL BE PRIME COAT PAINTED AFTER INSTALLATION IS COMPLETED. NOTE NEW BOLT ASSMEBLIES SHALL BE CLEANED OF ALL DEBRIS AND GREASE PRIOR TO PRIOR TO PRIMING.

SEE MARKED UP PHOTOS FOR ADDITIONAL CLARIFICATION:

